

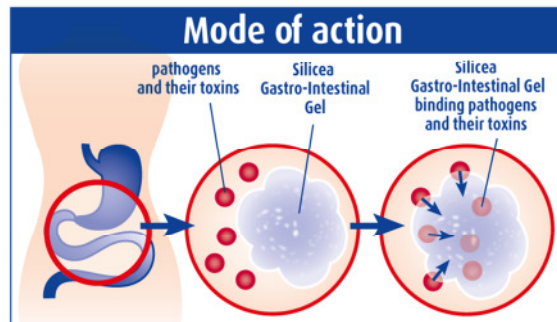
The gastrointestinal tract – a top athletic performer

400 square metres of surface area, seven to nine metres in length, and only a few centimetres in diameter - the human intestine with the dimensions of a giant constrictor snake has an important job to do.

Disorders of the gastrointestinal tract such as stomach aches, vomiting, or diarrhoea are frequently the consequence of e.g. consuming spoiled foods and drinks. Additional discomfort is caused by harmful pathogens and their associated toxins. Silicea Gastro-Intestinal Gel provides natural relief without adding to the strain on the gastrointestinal tract.

The emergency relief in your medicine cabinet

Silica contained in Silicea Gastro-Intestinal Gel is present in high concentration. As a result, it forms large molecular complexes. The great advantage of these complexes is their ability to unfold a tremendous binding potential. The pathogens and the associated toxins are adsorbed and subsequently excreted by natural means. The gastrointestinal tract is thus allowed to recuperate and not subjected to additional strain, for the composition of the gel is of a purely mineral nature and does not contain any chemical preservatives.



Silicea Gastro-Intestinal Gel is a highly tolerable medical device whose mode of action is based on physicochemical processes i.e. the gel does not enter the cells.

Studies confirm: Silica ensures relief!

